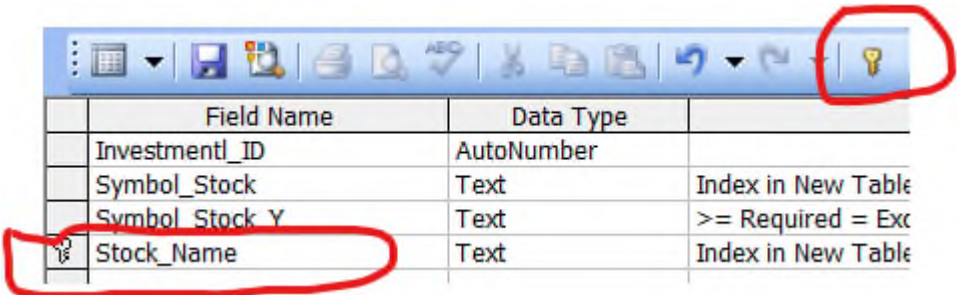


The approach is to copy the table but copy the structure only. Then set up the duplicate fields as a unique index or a primary key. Then, append the old table data into the new table. It should result in all duplicates removed. You can then decide to replace the old table with it or delete the old data and replace them with the unique data from the new table.

===

From Table			To Table		
	Field Name	Data Type	In Empty Table = Stock Name = Is Key Field		
	Sergey	Text			
	Trade	Text			
	Investmentl_ID	AutoNumber			
	Assets	Text			
	Symbol_Stock	Text			
	Symbol_Stock_Y	Text			
	Stock_Name	Text			
	SouthComments	Text			



Field Name	Data Type	Index
Investmentl_ID	AutoNumber	
Symbol_Stock	Text	Index in New Table
Symbol_Stock_Y	Text	>= Required = Ex
Stock_Name	Text	Index in New Table

===

Stock Name is a key field and is indexed with NO duplicates

General	
Field Size	60
Format	>
Input Mask	
Caption	
Default Value	
Validation Rule	
Validation Text	
Required	No
Allow Zero Length	No
Indexed	Yes (No Duplicates)
Unicode Compression	Yes
IME Mode	No Control
IME Sentence Mode	None
Smart Tags	

===

Append Query

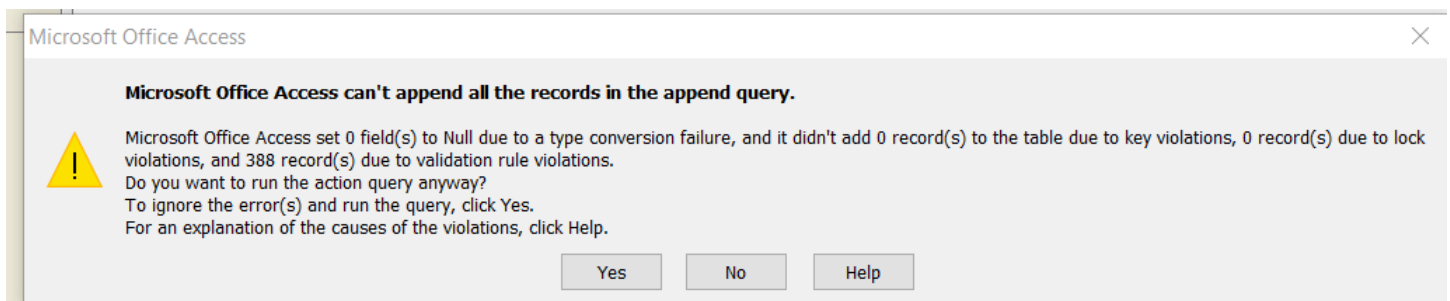
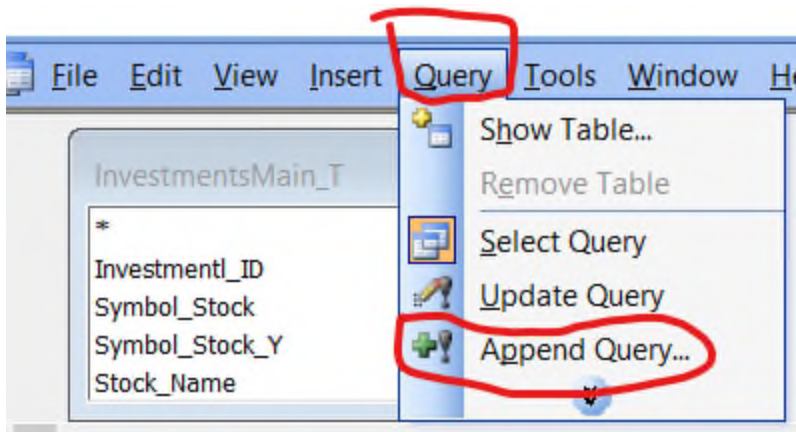
= From = Investments01_tbl

= To = InvestmentsMain_T

===

> Design View > Add Table

> Add Fields > Symbol_Stock > Stock_Name > Symbol_Stock_Y



Every Stock Name has been imported into the new table as duplicates

Investmentl_ID	Symbol_Stock	Symbol_Stock_Y	Stock_Name
5199	MMM	MMM	3M COMPANY
5593	MMM	MMM	3M COMPANY
5476	ACOPF	ACOPF	A2 MILK COMPANY LTD
5594	ACOPF	ACOPF	A2 MILK COMPANY LTD
5153	AZ.V	AZ.V	A2Z TECHNOLOGIES CANADA CORP
5595	AZ.V	AZ.V	A2Z TECHNOLOGIES CANADA CORP